



D E F Y I N G   C O N V E N T I O N

# Wine Storage Solutions



All wine lovers know that wine is fragile. It needs careful attention and storage to reach its full potential. However, the conditions that are conducive to this, seldom exist in the cellar of an old house, let alone the modern home where there is no traditional cellar. The traditional cellar does not exist. At Wine Corner we can offer the solution to this problem, no matter how large your wine collection might be. We do not believe in resting on our laurels.

Commitment to a programme of continual product development ensures that we always provide our customers with a wide range of products that offer optimum levels of performance and reliability.

To keep up with the product range and service developments, please visit our website [www.winecorner.co.uk](http://www.winecorner.co.uk). Alternatively, if you have any questions relating to our products and service, please call us on 01302 744916 or Local Rate on 0845 3016617.

## Wine Cellar Services

bespoke wine cellars that defy convention

### Consultation

Wine Corner can provide ideas and recommendations, as well as a plan that meets your objectives, so that your cellar is just right for you.

### Project Management

From start to finish, we manage and supervise the building of your cellar to ensure that budgets and schedules, as well as specifications, are followed.

### Design

Our knowledge of construction, cooling systems and storage options enables us to offer designs that enhance the space as well as provide a perfect environment for fine wine storage. We review potential wine racking solutions and provide you with a design that uses the space effectively, is aesthetically pleasing and caters for the size of your collection.

### Construction

Wine Corner can provide construction services as well as consultancy, project management and design. Almost any free available space in your home can be used; for example the cellar of your house if you have one, your attic, an outbuilding or even your garage. Whatever the space, we enhance the natural features of the space to build wine cellars of distinction that defy convention.

All our bespoke cellars are fully insulated and use the very latest wine conditioning units so you can be assured of a superb wine cellar when you commission Wine Corner.



# Wine Cellars from Wine Corner

## The benefits

### Easy to use

A digital control panel is used to set the conditioner to the required temperature and can be checked at a glance to ensure that your wine storage conditions are optimal.

### Anti-vibration system

Vibration is not good for your bottles; it can result in deterioration of the wine. With our cellars, all moving parts are mounted on rubber shock absorbers which absorb the vibrations.

### Made to last

Through the choice of high quality components (compressor, thermostat, exchangers, fans etc.), inspection each stage of manufacture and use of tried and tested designs, our cellar air-conditioners are made to last.

### Constant temperature

All our conditioners are equipped with an electronic thermostat with digital display. Accurate and reliable, it automatically maintains the required temperature (8°C - 14°C). They are also equipped with a resistor so that you can heat the atmosphere if necessary. Your cellar will be maintained at a constant temperature all year round. To avoid wide variations in temperature between floor and ceiling, the unit permanently circulates the air in the cellar, thus preventing any stagnation.

### Controlled humidity

Excess humidity promotes the growth of mould. On the other hand, an atmosphere which is too dry threatens the cork seal. The ideal relative humidity level is between 60 and 80% and it varies with ambient temperature. The operating principle is to condense excessive moisture and evacuate it. Indeed, the evaporation temperature (on the cold side) has been designed and adjusted to avoid drying the air excessively and to maintain humidity at the required level.

### Easy to maintain

All conditioners are fitted with interchangeable dust filters. With use, the heat exchanger becomes loaded with dust, preventing the device from cooling properly, which leads to an increase in gas pressure and could eventually destroy the compressor. The filter considerably reduces the deposit of dust and also facilitates cleaning.



### Silent, for a peaceful atmosphere

Particularly silent fans and acoustic foam keep the units very discrete. The Wine C50S model also has a pressure switch which adjusts the speed of the outside fan according to need, thereby reducing noise even more. Laboratory measurements on the most powerful model in the range recorded only 47dB 1m from the device and 43dB at 3m.

### Ecological and efficient

All our conditioners run on R404a gas, an ecological coolant with no CFCs, which conserves the ozone layer. Compared with other gases, such as R134, this gas gives the compressor greater power while reducing the space required and controlling electrical consumption. The compressor's cooling capacity also helps to increase its life span.

### A profitable investment

With a bespoke, quality wine cellar design and installation, you can now purchase young wines, particularly vintage wines which will increase in value as they age. You can store a large number of bottles (several thousand), which is a great advantage, particularly when compared with wine cabinets, which have limited capacity.





# Wine Conditioning

## Integrated models: installation inside the cellar

The C50S and C50SR are installed inside the cellar with an external air inlet and hot air outlet duct. As such these models are very discrete, being practically invisible from the outside.



### Wine C50S & C50SR advantages

Designed for volumes up to 50m<sup>3</sup>, the C50S and C50SR conditioners are designed for both professionals and amateurs.

#### Protects the wine against excess light

Wine must be kept away from bright light and ideally should be kept in the dark. The Wine C50S and C50SR are equipped with a pilot light which is reduced in intensity but adequate for you to choose your vintage wines.

#### Easy to install

These models are supplied with a wooden frame so that it can be built-in.

#### Complete standard equipment

The Wine C25 has all the same advantages as the more powerful models in the range:

- "Two-step" electronic thermostat with function display
- On/Off switch with "booster" setting to reduce the time taken for the cellar to reach an optimum, evenly distributed temperature
- Pressure switch for adjusting the outside fan speed
- A dust filter for easier maintenance
- R404a gas coolant, without CFCs
- Reaction turbines
- Heating function

## Built in models: installation through the wall

### Wine C25, C25S & C25SR advantages

The C25, C25S and C25SR are specially designed for small volumes and provides conditioning for up to 25m<sup>3</sup>. They are easy to install as well as quiet in operation.



#### Excellent value for money

The Wine C25 gives excellent value for money as well as excellent performance. Like the other models, the wooden frame is supplied with the device and is included in the price.

#### Attractive

Particularly compact, its fluid lines and colour, evoking the world of wine, blend harmoniously into your cellar.

#### Space-saving

With its shallow depth, the Wine C25 is perfect for small areas such as an attic, a cellar or any small space you decide to use for storing wine.

#### Fully equipped

The Wine C25 has all the same advantages as the more powerful models in the range:

- An electronic thermostat with digital display
- A dust filter for easier maintenance
- R404a coolant, without CFCs
- Reaction turbine on the condenser side
- Wine C25S and C25SR models also features a heating function
- Wine C25SR model features a heating belt to combat frost where the unit is mounted on an external wall



# Units

## Which model is right for you?

### Split models

#### Wine C25IN & C50IN advantages

Designed for volumes up to 25m<sup>3</sup> and 50m<sup>3</sup> the Wine C25IN and Wine C50IN have the same benefits as the Wine C25S or the Wine C50S



and will delight the most demanding customers with their discretion and installation facilities.

#### Practical

The C25IN or C50IN are installed inside your cellar. Only two 125mm diameter holes for the C25IN, or 150mm for the C50IN, are needed for the ducts to be fitted. The maximum lengths of the ducts is 6m (2x3m) for both models. These are ideal devices where hot air can only be evacuated outside the building.

#### Easy to install

With the Wine C25IN and Wine C50IN, installation is easy and unlike 'split' systems, no cold connection is needed. An installation kit including a set of accessories, notably the insulating ducts and decorative grilles, is included.

#### Discreet

These two models are installed entirely inside your cellar. Attached to the wall (Wine C25IN) or floor mounted (Wine C50IN) they are invisible from outside, which protects your installation from indiscreet observation.



#### Wine SP100 and SP100-8 advantages

The Wine SP100 and SP100-8 offers substantial cooling power. Designed for volumes of up to 100m<sup>3</sup>\*, these air conditioners consists of two elements which are connected to each other, one located inside the cellar, and the other outside.

#### Practical

Connection between the two units is simple. This is done via a flexible section which is either 4.5 or 8 metres long, and has a diameter of only 50mm. The external unit, which has a low sound level, can therefore be moved away from the internal unit, and installed outside the building. This is an ideal solution if the cellar is underground, or is in a location adjacent to the dwelling.



#### Easy to install

The SP100 is a split system which can be complicated to install. However, this has been made easy with the SP100 and you only have to join the two connections.

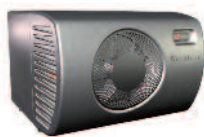
#### Complete standard equipment

- Electronic thermostat with digital display, which is simple to use and is factory pre-set
- Dust filter for easy maintenance. This ensures that your wine conditioner has a long service life
- Heating function
- R407c CFC-free ecological coolant gas, which increases the power of the compressor
- Reaction fans for well-controlled electrical consumption

\* depending on insulation

# Technical Information

- 1 For larger volumes, please contact us
- 2 Dimensions H x W x D (in mm). For specific internal and external dimensions, please contact us.
- 3 Dust filters available separately



**Wine C25,  
C25S, C25SR**



**Wine C50S,  
C50SR**



**Wine C25IN**



**Wine C50IN**



**Wine SP100  
& SP100-8**

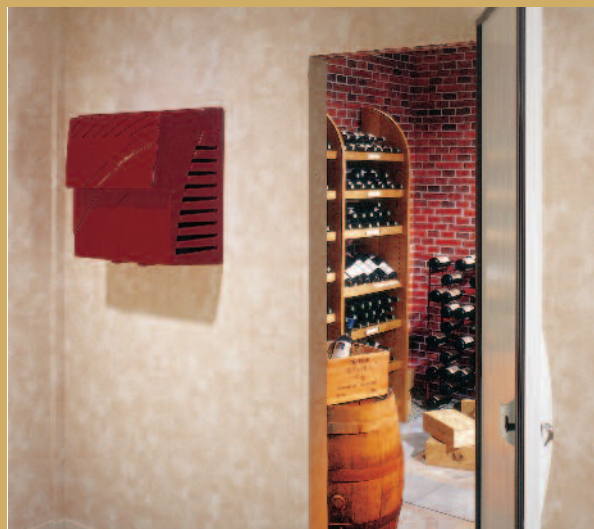
Conditioning capacity according to insulation <sup>1</sup>	up to 25m <sup>3</sup>	up to 50m <sup>3</sup>	up to 25m <sup>3</sup>	up to 50m <sup>3</sup>	up to 100m <sup>3</sup>
Overall dimensions <sup>2</sup>	440h x 548w x 380d	510h x 552w x 530d	465h x 676w x 390d	390h x 485w x 925d	1005h x 480w x 395d
Weight	31 kg	45 kg	40 kg	51 kg	45kg (int) 15kg (ext)
Outer dimensions of wooden frame used for building-in <sup>2</sup>	374h x 514w x 150d	150 x 544 x 374	—	—	—
Cooling power	550 W	1200 W	550 W	1200 W	2500 W
Power consumption	440 W	900 W	440 W	900 W	1250 W
Electrical power	230-240V - 50 Hz	230-240V - 50 Hz	230-240V - 50 Hz	230-240V - 50 Hz	230-240V - 50 Hz
Coolant	R 404 a (no CFCs)	R 404 a (no CFCs)	R 404 a (no CFCs)	R 404 a (no CFCs)	R 407 c (no CFCs)
Diameter of condensate evacuation pipe	9 mm	9 mm	9 mm	10 mm	10mm
Wooden frame supplied with the device	yes	yes	—	—	—
Connecting kit	—	—	IN option	IN option	—
Heating function	25S and 25SR only	yes	yes	yes	yes
Heating power	250 W for CS25	500 W	250 W	500 W	1000 W
Thermostat and thermometer with digital display	yes	yes	yes	yes	yes
Dust filter <sup>3</sup>	yes	yes	yes	yes	yes
Reaction turbines	yes (condenser side)	yes	yes (condenser side)	yes	yes (condenser side)
Lighting (device with a pilot light)	no	yes	no	yes	no
Guarantee	2 years	2 years	2 years	2 years	2 years
Installation guide supplied with the device	yes	yes	yes	yes	yes
Sound level to 1m - 3m	49dB - 40dB	51dB - 47dB	43dB - 38dB	53dB - 50dB	53dB - 50dB
Heating strip to combat frost	only C25SR	yes	—	—	—

## Optional Airtight Door

Made of lacquered steel, with polyurethane insulation to guarantee optimal insulation.

Overall external dimensions  
Height 1900mm - Width 600mm

Doorway dimensions  
Height 1860mm - Width 590mm





**Wine PC15**



**Hygromaster**

up to 15m <sup>3</sup>	
2020h x 760w x 254d	
100kg (the unit)	
—	Power consumed for humidification: 45 W
400 W	
390 W	
230-240V - 50 Hz	Voltage: 230-240 V - 50 Hz
R 404 a (no CFCs)	
—	Intensity used for humidification: 0.2 A
—	
—	Humidification capacity: 18.2g water/h at 12°C
—	
yes	
yes	Dimensions: 140h x 258w x 166d
yes	
no	Power card length: 1.5m
2 years	
yes	
42dB - 40dB	
—	

**Guarantees**

All refrigeration units come with a 2 year warranty.

**Installation**

For more detailed information regarding installation please refer to our website or contact us.



**PC15 - Built in Convenience**

An insulated door with integrated wine conditioning unit. Comes with a lock and frame which is made of lacquered steel, with polyurethane insulation to guarantee optimal insulation.



**Hygromaster®**

A humidifier which enables you to set the humidity level appropriate for your wine cellar. Can be hung on the wall, set on the floor or on a stable shelf. Delivered with a water tank including connecting parts and water pipe.

**Wine Cabinets**

*For smaller collections we can supply a wide range of cabinets - see back page for more details.*

**Wine Racking**

*We have access to a varied range of racking or can provide bespoke built - contact us to find out more.*



**Custom Built Wine Cabinets**

*There's no limits on what can be done - see back page*

# Wine Cabinets

For the smaller wine collections and for everyday wine consumption, freestanding or integrated wine cabinets can be the perfect solution to your storage requirements. Wine Corner offers a wide range of wine cabinets as well as offering bespoke cabinet production.

- 57 to 276 bottle capacity (more with bespoke options)
- Solid wood, metal, integrated and free standing options
- Single door under counter versions
- Two door upright and side by side versions
- Doors available in a variety of finishes
- Interior walls are pre-painted stainless steel to make them easy to clean, long lasting and robust
- Anti-UV doors to protect wines from the light
- High density polyurethane insulation to enable consistent temperature within the cabinet
- Option of cabinets with differing constant temperatures allowing you to keep different types of wines in the same cabinet

C300 - Multi or mono temperature black enamelled model with solid black enamelled door.



JG 51 - an integrated model. Adequate ventilation is required for all built-in models.



C501 - Multi or mono temperature black enamelled model with glass door.



CEX801 - Wood model with glass door and multi temperature.



CEX501 - Wood model with glass door.

# Custom Built

Struggling to find the wine cabinet you want? Wine Corner can help with custom made wine cabinets.

If you want a one off, made to order wine cabinet, Wine Corner has the answer. We can make cabinets of various sizes and shapes, in the wood you prefer, or in stainless steel, or in the colour of your choice. You can also specify the interior finish of the wine cabinet and the number of shelves.

This custom built service means you'll get your own unique wine cabinet. Fitting perfectly into the space you have, complementing or contrasting with your other furniture, a custom built option can either be an understated or a stunning addition to a room. For more details, please call 01302 757047.



Unit 4 Brunel Close, Harworth, Doncaster DN11 8QA  
Tel: 01302 744916 or Local Rate on 0845 3016617  
Fax: 01302 751233 E-mail: info@winecorner.co.uk  
www.winecorner.co.uk



DEFYING  
CONVENTION